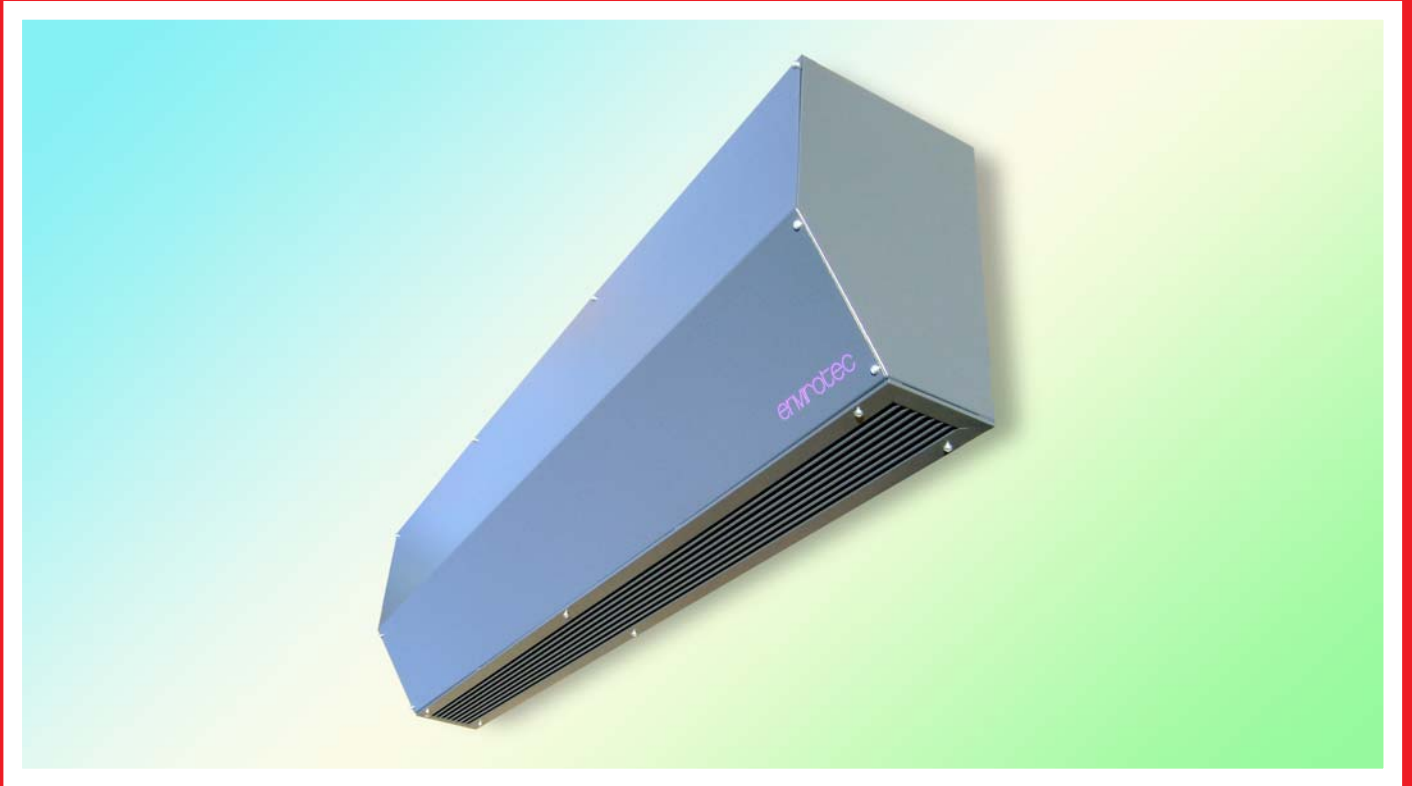


envirotec

Series ES

Enviroscreen door curtain



The 'ENVIROSCREEN' range of Warm Air Curtains are designed for use where little or no bulk head exists, and the only place to position the unit is directly above the doorway. They are completely self contained and are available in both Hot Water and Electric forms. The maximum recommended mounting height is 3.05 metres (10ft).

Units can be installed singly or can be 'Banked' to provide one continuous air curtain.

A disposable filter is included as standard, which not only ensures that the supply air is filtered, but also protects the internal components, thus minimising maintenance.

Changing of filter is readily achieved without the removal of

any panels or screws by simply lifting out from the top of the unit.

A low noise version for libraries and offices is available if required. Furthermore, these units can be used as convectors, and in most models are provided with two-speed fans for dual purpose use.

**a range of air conditioning equipment including:-
envirolators, door curtains, smoke fans,
axial & bifurcated fans, air handling units,
fan coil units, twin extract units, custom built units.**

envirotec

SPECIFICATIONS

FANS

Double inlet, Double Width centrifugal type, for quietness of operation, producing approximate outlet velocity of 7.6 m/s (1500fpm).

MOTOR

220/240 volts, single phase, 50Hz two speed type. Resiliently mounted into fan casings and with 'sealed-for-life' bearings. Manufactured to latest European Standards.

Enviroscreen 12 & 18 – 0.2Kw, F.L.C. 2.5 amps, S.C. 6.5 amps.

UNIT CONSTRUCTION

Zinc plated mild steel, finished in gloss white powdercoat. Alternative colour finishes are available on request.

HEAT EXCHANGER

Hot water – Aluminium fins bonded to copper tubing, pressure tested to 22 bar (350 lbf/in²) and terminating in 15mm plain copper tails for compression joint fixing inside the unit.

Electrical – 3-phase, 3 element finned type, constructed from high quality 80/20 nickel chrome resistance wire centred in metal tubes by compressed magnesium oxide. A wall mounted control switch is available for both Water and Electric units. Control panels for operating banks of electric units & incorporating a 3-heat facility can also be supplied.

A manual re-set high limit cut-out is fitted in accordance with normal safety requirements.

OUTLET GRILLE

Aluminium fixed blade type, finished in gloss white powdercoat. Adjustable blade grilles are available on request.

FILTER

Disposable type located in top of unit. Washable filters can be supplied if preferred.

Enviroscreen 12 – 1000 x 220 x 12
Enviroscreen 18 – 745 x 220 x 12 (2 off)

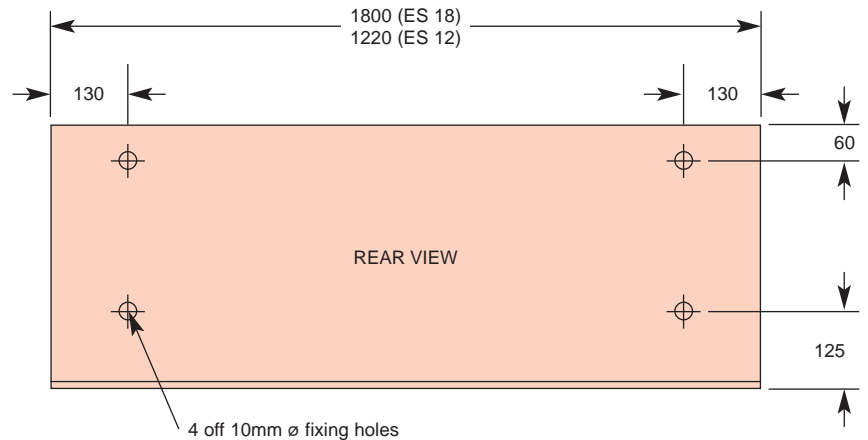
NOMINAL OUTPUTS

MODELS	LPHW HEATING	HYDRAULIC RESISTANCE	FLOW RATE	ELECTRIC HEATING
ES 12*	9kw	4.3 Kpa (1.4 ft)	0.18L/s (2.4g/min)	9kw
ES 18*	14kw	11.3 Kpa (3.7 ft)	0.29L/s (3.8g/min)	12kw

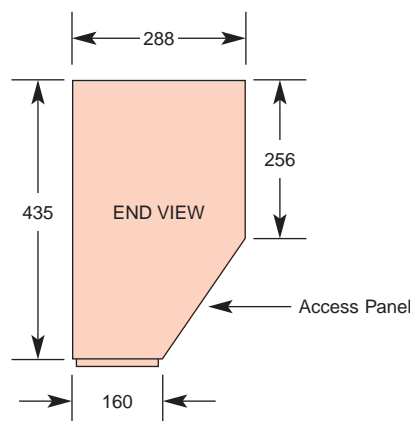
*W or E should be suffixed to denote water or electric. L.P.H.W. outputs are based on water at 82°C flow/71°C return with entering air at 10°C.

Ceiling mounted door curtains are covered by our Mk 9, Mk 10, ESS and Modular types. Other overdoor types include the Spacesaver, CDC and EAB.

Alternative kilowatt outputs available to order.



Top fixing available if required.



WEIGHTS UNPACKED

ES 12 – 30 Kg
ES 18 – 50 Kg